



WallboxPlayer – Manual

www.wallboxplayer.com

Sep 2025

The WallboxPlayer is a device that turns a wallbox or vintage telephone into a music player. This manual provides basic instructions on how to set up and operate the WallboxPlayer. For installation instructions, refer to the manuals on the website.

WallboxPlayer features:

- Select songs on your wallbox to play your music with or without a jukebox
- Song queue and/or random play
- Audio (3.5mm jack) output (unamplified).
- Speaker or Bluetooth outputs (option)



The WallboxPlayer supports a range of pulse-controlled wallboxes, the Seeburg DEC and some telephones. Power to the player is provided from the wallbox or a 5V adapter, reducing the need for an extra power supply. Music is stored on a microSD card and can be filled matching the wallbox titles. The MP3 SD card slot can be found on the top left under the MP3 player; contacts should be on your side and visible before inserting. The MP3 files are stored on a micro-SD card (FAT32 max 16GB). Ensure card is clicked in. For information on formatting and listing, see below.

POWER UP: the screen shows messages with the release version and number of MP3/WAV files on music SDcard. After a few (6-8) seconds the system is ready with green LED on. If the control relay is set up to enable the lightbulb, the blue led will also be on, showing that selection can be made. When during startup, the music files can't be read, the red MP3 player LED will not be on.



SETUP: The onboard and extra mounted 'select/cancel/setup' button serves two functions. Its primary function is to cancel the currently playing song or add a song when nothing is playing. The setup menu is accessed by pressing the 'select' button for 5 seconds. After an initial message, subsequent settings will be shown to be modified. Pressing the button will change the value of the item, waiting will show the next configuration item.

Tools: This menu choice will allow system updates, reset values, restart and other utilities. Selecting "DEFAULTS" will set values of settings back to factory defaults. Choices: **NO, RESTART, DEFAULTS, UPDATEMODE, LISTEN.**

Wallbox In: This will configure what input signal is detected by the board, the type of wallbox the board is connected to. Compatible choices: **NONE, MP3, Sb_3W1, Sb_3W100, Sb_3W160, Sb_3WA, Sb_SC1, Seeburg_DEC, Seeb_DEC-direct, Ami_W40, Ami_W80, Ami_W120, Ami_W200, Roc_1544, Roc_1504, Roc_1555, Roc_1558, Wur_5200, Wur_5207, Wur_5210, Wur_5220, Wur_5250, Wur3020, Dial1, Dial2, Dial3, Matrix, Wireless...** and other types depending on release

Volume: This will determine the output volume of the MP3 player (jack output and speakers). It can be adjusted from 0 to 24, suggested is 20-22. Choices: **0...24.**

Equalizer: This will select one of the available equalizers (jack output and speakers), the best choice is BASS or POP. Choices: **FLAT, POP, ROCK, CLASSIC, BASS (and boost variations)**

AutoPlay_number: If selecting this number with the buttons, (1='A1' or '001' or '100' etc.) autoplay will play random songs until selected again. **0, 1 ... 159, 160, 199, 200 (default is 0, off)**

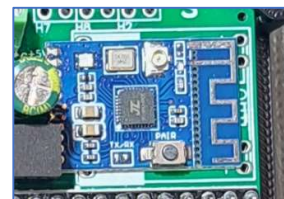
SelectMode (exp/proto) R12.6 onwards: prototype function. If enabled **AlbumFolderPlay** will play selected folder /01/ to /98/; /99/ is for extra songs 001.mp3, 002.mp3 etc. **MP3NumberPlay** will play in /MP3/ 0001.MP3 0002.MP3 etc. To turn this off select 'FilePlay'. To disable adding songs with the button, select **NoAddSong.**

Control_mode determines the function of the additional on-board relay: **NONE, JBCANCEL, WBCOIN, WBCREDIT, SELECT_LAMP, ON-OFF (default is NONE).** The "Select_lamp mode" can enable the "Make selection" lamp in the wallbox.

Speed_adjust_hz and Add_Pulses (optional, only for UWB): United UWB determines selection with distance between pulses. This setting tunes it for 50Hz/60Hz if motors are slower or faster. Add pulses to correct for offset letters or numbers, 0 is no correction.

Note: For some earlier player versions, more settings were possible. It is suggested to leave them on the default. Jukebox Out must be on MP3. For other selections, it will send out a pulse to a connected jukebox. Other advanced settings can be changed with an SD card in the optional data SD card slot (right of the display).

Pairing Bluetooth (option): When paired and connected, the red BT board-LED blinks twice at ~5 sec interval. When idle and unpaired the red LED flashes slowly (~1sec interval). Short-Press the button for unpairing. To pair with a Bluetooth device, ensure it is not paired (with other device), put the Bluetooth speaker in pairing mode and press (2sec) the [pair] button (see picture), the red LED will blink slowly (at ~2sec interval) and start pairing. For more information look at the KCX BT module documentation.



DOWNLOADING MP3's: You can use YouTube to find a song, copy URL with right click and past in a mp3 converter (e.g. <https://ytmp3.la/en-yMP0/>) or MediaHuman YouTube converter. Download and then copy onto microSD card (see below). Observe copyright aspects.

PLAY SONGS: After power up, it takes 6-8 seconds for the player to be ready. The WallboxPlayer in the wallbox (or an enclosure) has the following functions available

- Press the "Select/Cancel/Setup" button on the board or the connected button mounted in the wallbox to test if (random) song will start. Press again to cancel. For some phones, raising the hook will also have this function.





- Make selection on the Wallbox with the wallbox buttons or select using the dial (on the phone). Pulses will be sent to the WallboxPlayer. The selected song will start.
- Songs can be selected on the wallbox, play will start after selection or when a song is playing, song will be added to the queue (up to 20 songs in a queue).
- If a song is playing, the 'select' button will cancel the song (and play next in queue)
- If no song is playing, pressing the 'select' button will add a random song to the queue.
- **AutoPlay:** Pressing the select button longer (1-2sec) will start and stop AutoPlay. Random songs will automatically be added and played (even MP3's on the SD beyond the selection limit of 160 or 200 – see further below), press button 2 seconds again to switch off the function
- If enabled, **AutoPlay** can also be started and stopped with wallbox buttons defined by the AutoPlay number in the setup (e.g. 160selects: 1 for A1 or 160 for U8, DEC: #100 or 279, 200selects: 1 for A1 or 200 for V0 – depending on wallbox). Can also be set e.g. to 000 or 001 for Dial systems,
- For the **AlbumPlay** mode (proto), selections will play folder /XX/ and extra songs in folder /99/. When playing, short-press will skip to next song, long-press will cancel current album-play.
- **Dial and Keypad players:** 00/000 is "AutoPlay"; 99 or 999 can be set up as "Play favorites" with a button to add a playing song to favorites (max 10). Some of these players can have an optional **Golden5 button** to play the first 5 songs in SD.
- WallboxPlayer may have an optional **external volume control** (50k 3wire) to control sound from 0-100%.



SONGS ORDER: (Re)loading songs, playing more than selectable, and making listing

The MP3 (or WAV, WMA) files are stored on a micro-SD card. Ensure the card is clicked in. The microSD card must be formatted as FAT32 (max 16GB - some 32GB cards cannot be read)! The number of music files can be as many selections as the wallbox selects. Put the files in the card root folder. When copying files from the PC onto the SD card, **Windows** hustles the order that then does not match the file/selections. On **Apple-Mac**, specifically select the order you want (e.g. alphabetical). A foolproof way to get the numbering and ordering right is as follows:

- Format the SD card
- Copy files from computer to SD, one at a time starting with the first one
- Wait until each file is copied, then copy the next (every time just one at a time)

This way, windows will not change the order as every file can only be added and has a later timestamp than the previous one. The best way to get a matching listing of the order of the songs on the music SD, use DOS command (run **CMD** after clicking magnifying-glass search icon and **CD** to your SD card): then **DIR /B /A:-D *.MP3 > SONGS.TXT**. This will create a file that you can read and use for song titles.



```
F:\>DIR /B /A:-D *.MP3 > SONGS.TXT
F:\>type songs.txt
Louis Armstrong - What A Wonderful World.mp3
Elvis Presley - Jailhouse Rock.mp3
Chuck Berry - Roll Over Beethoven.mp3
Tom Jones - It's Not Unusual.mp3
Beatles - Yesterday.mp3
Bill Withers - Ain't No Sunshine.mp3
Beatles - Eleanor Rigby.mp3
James Brown - It's A Man's Man's World.mp3
Charles Aznavour - She.mp3
Frank Sinatra & Count Basie - Fly Me To The Moon.mp3
```

A feature of the WallboxPlayer is playing songs that go beyond the selectable numbers. This is great for random play. Simply create an extra folder (after having put the selectable songs on the music SD) and simply fill it with the songs you want to hear in random play mode. In below, the folder "extra songs" contains songs (see picture).

Name	Status	#	Title
Extra songs			
Elvis Presley - Jailhouse Rock.mp3		380	Jailhouse Rock
Chuck Berry - Roll Over Beethoven.mp3		1965	Roll Over Beethoven
Tom Jones - It's Not Unusual.mp3		2066	It's Not Unusual
Beatles - Yesterday.mp3		18	Yesterday
Bill Withers - Ain't No Sunshine.mp3		654	Ain't No Sunshine
Beatles - Eleanor Rigby.mp3		236	Eleanor Rigby

CREATE SONGTITLES:

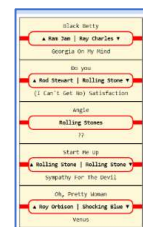
The following free web-applications to create strips are available:

<https://www.pinballrebel.com/archive/other/onlinenew/index.html> or
<https://www.mikesarcade.com/arcade/titlstrips.php>

WallboxPlayers with data SD slot option (software V11 and up): Configurations that have a data SD card (right of the display, see picture), enable creation and use of song labels and displays song filenames (and web browser). For labels and the display, song information from filename will be generated. Once this is done, the data SD card can be removed and settings remembered.



- To generate these files, insert the MUSIC SD (with mp3's) in the data SD slot and (re)start the device. Files **SONGS.TXT**, **PRINT.HTML** and **LABELS.HTML** are generated in folder **/labels/**. These can be used to help make song listings and labels (open with computer). Files can be simply edited/corrected by clicking and editing, before printing. After generating files, insert music SD into the blue player SD slot again.
- To generate a custom listing or for album mode play, the file **SONGS.TXT** (with a song- or album-name on each line, sequential) on the data SD card in **/labels/ (/labels/SONGS.TXT)** will determine the labels shown on the display.



Nr:	Label:	Song
160:	V8:	AUTOPLAY ON/OFF
001:	A1:	Ram Jam - Black Betty
002:	B1:	Ray Charles - Georgia On My Mind
003:	C1:	Rod Stewart - Do you
004:	D1:	Rolling Stones - I Can't Get No Satisfaction
005:	E1:	Rolling Stones - Angie
006:	F1:	Rolling Stones - 77
007:	G1:	Rolling Stones - Start Me Up
008:	H1:	Rolling Stones - Sympathy For The Devil
009:	J1:	Ray Charles - Oh, Pretty Woman
010:	K1:	Shocking Blue - Venus
011:	L1:	Simon & Garfunkel - Bridge Over Troubled Water
012:	M1:	Simon & Garfunkel - The Sound Of Silence
013:	N1:	Soft Cell - Tainted Love
014:	P1:	Status Quo In The Army Now
015:	Q1:	Status Quo Roll Over Lay Down
016:	R1:	Status Quo - Whatever You Want
017:	S1:	Steppenwolf - Born To Be Wild
018:	T1:	Steve Wonder - Isn't She Lovely

More information can be found on the website www.wallboxplayer.com.