



WallboxPlayer – Manual

The WallboxPlayer is a device that turns a wallbox or vintage telephone into a music player. This manual provides instructions on how to set up and operate the WallboxPlayer. For installation, see manuals on the website www.wallboxplayer.com.

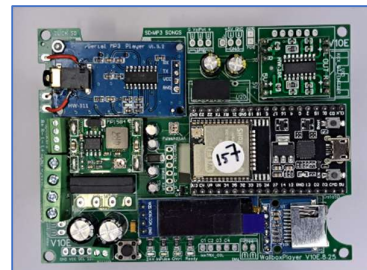
WallboxPlayer features:

- Select songs on your wallbox to play your music without a jukebox
- Song queue and/or random play
- Stereo Audio (3.5mm jack) line output
- Speaker OR Bluetooth output (option)



The WallboxPlayer supports a range of pulse-controlled wallboxes, the Seeburg DEC and telephones. Power to the player is provided from the wallbox or a 5V adapter. MP3 music (or WAV, WMA) is stored on a microSD card (FAT32 max 16GB). The MP3 SD card slot is on the top left under the MP3 player; contacts should be on your side before inserting. Ensure card is clicked in. For information on formatting and listing, see below.

POWER UP: the screen shows messages with the release version and number of MP3/WAV files on the music SDcard. After 6-8 seconds the system is ready with green LED on. The optional blue LED indicates activation of the control relay (to enable "make selection" light). When music files cannot be read, the red MP3 player LED will be off.



SETUP: The onboard and extra mounted 'select/cancel/setup' button serves two functions. Its primary function is to cancel the currently playing song or add a song when nothing is playing. The setup menu is accessed by pressing the 'select' button for 5 seconds. After an initial message, subsequent settings will be shown to be modified. Pressing the button will change the value of the item, waiting will show the next configuration item.

Tools: This menu choice will allow system updates, reset values, restart and other utilities. Keep on "NO" to go to next item.

Choices: NO, RESTART, DEFAULTS, CLEAR-TITLES, CLEAR-FAVS, UPDATEMODE, LISTEN.

Type/Brand and Wallbox (In or Device): This will configure what wallbox type input detected by the board. Choices: NONE, MP3, Sb_3W1, Sb_3W100, Sb_3W160, Sb_3WA, Sb_SC1, Seeb_DEC, Seeb_DEC-direct, Seeb_3W1_A1B1, Seeb_3W1_AltFix, Ami_W40, Ami_W80, Ami_W120, Ami_W200, Roc_1544, Roc_1504, Roc_1555, Roc_1558, Wur_5200, Wur_5207, Wur_5210_50, Wur_5220, Wur_5250, Wur3020, Dial1, Dial2, Dial3, Matrix, Packard, and other types depending on release

Volume: Output of the MP3 player (jack output and speakers/BT). Suggested is 20-25. Choices: "0...25".

ExtVolumeControl (boards V10 and up): Allows volume setting with external potmeter for boards with 3-pin potmeter connector. Choices: None, ExtPot, Dial0. Default/off is NONE.

Equalizer: This will select one of the available equalizers (jack output and speakers), the best choice is BASS or POP. Choices: FLAT, POP, ROCK, CLASSIC, BASS (and BOOST variations with +20%)

AutoPlay_number: If selecting this number with the buttons, (1-'A1' or '001' or '100') autoplay will play random songs until selected again. 0, 1 ... 159, 160, 199, 200 (default is "0", off). Mostly this setting is set to "1".

SelectMode (R14 onwards): Determines organization of files. AlbumFolderPlay will play selected folder /01/ to /98/; /99/ is for extra songs 001.mp3, 002.mp3. MP3NumberPlay will play four-digit numbered organized files in /MP3/ 0001.MP3 0002.MP3. See notes below. To turn this off and select default, choose FilePlay. To disable adding songs with the button, select NoAddSong.

Control_mode for the function of the additional on-board relay: NONE, WBCOIN, WBCREDIT, SELECT, POWER, JBPULSE, SONG-PLAYING (default is NONE). The "Select"-mode can enable the "Make selection" lamp in the wallbox. WBcoin and WBcredit will pulse control relay after selection. POWER controls lights. SONG-PLAYING: ON when song is playing.

Speed_adjust_hz and Add_Pulses (only for UWB): Tunes selection with distance between pulses. For 50Hz/60Hz motors are slower/faster or add pulses to correct for offset letters/numbers.

AutoPlay_startup: To automatically start AutoPlay after power up. Setting is in minutes (default/recommended is "0", off).

Note: For earlier player versions, leave other settings on default. Player/Jukebox Out MUST be on MP3. For other selections, it will send out a pulse to a connected jukebox and give a message that player is unavailable. Other advanced settings can be changed with an SD card in the optional data SD card slot (right of the display).

CHECKING your wallbox PULSES and spikes can be done in SETUP, with TOOLS > LISTEN. Enter this mode, make selections, and check the display for pulse information from your wallbox (F=first S=Second; I=Interval).

PAIRING BLUETOOTH (option): When paired and connected, the red BT board-LED blinks twice at ~5 sec interval. When idle and unpaired the red LED flashes slowly (~1sec interval). Short-Press the button for unpairing. To pair with a Bluetooth device, ensure it is not paired (with other device), put the Bluetooth speaker in pairing mode and press (2sec) the [pair] button (see picture), the red LED will blink slowly (at ~2sec interval) and start pairing. More information: 'KCX BT module'.



DOWNLOADING MP3's: You can use YouTube to find songs, copy URL with right click and past in a mp3 converter (e.g. <https://ytmp3.la/en-yMPO/>) or MediaHuman YouTube converter. Download, copy to microSD card. Observe copyright.



PLAY SONGS: After power up, it takes 6-8 seconds for the player to be ready.

- Press the "Select/Cancel/Setup" button on the board or the connected button mounted in the wallbox to start a (random) song. Press again to cancel. For some phones, you can raise the hook to do this.
- Make selection on the Wallbox with the wallbox buttons or select using the dial (on the phone). Pulses will be sent to the WallboxPlayer. The selected song will start.
- Songs can be selected on the wallbox, play will start after selection or when a song is playing, song will be added to the queue (up to twenty songs in a queue).
- If a song is playing, the 'select' button will cancel the song (and play next in queue)
- If no song is playing, pressing this button will add a random song to the queue.
- **AutoPlay:** Pressing the select button longer (1-2sec) will start and stop AutoPlay. Random songs will automatically be added and played (even MP3's on the SD beyond the selection limit of 160 or 200 – see further below), press button 2 seconds again to switch off the function.
- If enabled, **AutoPlay** can also be started and stopped with wallbox buttons defined by the AutoPlay number in the setup (e.g., **160selects: 1 for A1 or 160 for U8, DEC: #100 or 279, 200selects: 1 for A1 or 200 for V0 – depending on wallbox**). Can also be set to 000 or 001 for Dial systems,
- For the **AlbumPlay** mode, selections will play folder /XX/ and extra songs in folder /99/. When playing, short-press will skip to next song, long-press will cancel current album-play.
- **Dial and Keypad players:** 00/000 is "AutoPlay"; 99 or 999 can be set up as "Play favorites" with a button to add a playing song to favorites (max 10). Some of these players can have an optional **Top5** button to play the first five songs in SD.
- WallboxPlayer may have an optional **external volume control** (50k 3-wire) to control sound from 0-100%.



SONGS ORDER AND PLAYMODES. Loading songs, playing more than selectable, listings:

The MP3 (or WAV, WMA) files are stored on a micro-SD card. Ensure the card is clicked in. The microSD card MUST first be formatted as FAT32 (max 16GB as some 32GB cards cannot be read).

There are 3 different selection modes. Versions up to SW V14 only have FilePlay (default).

* SelectMode = FilePlay (Default)

Place selectable files in the card root folder (filename is not important/relevant). Note when copying files from the PC onto the SD card, **Windows** hustles the order that then does not match the file/selections. On **Apple-Mac**, specifically select the order you want (e.g., alphabetical). To get the ordering right is as follows:

Format the SD card; Copy files from computer to SD, one at a time starting with the first one; Wait until each file is copied, then copy the next (every time just one at a time).

This way, windows will not change the order as every file can only be added and has a later timestamp than the previous one.

* SelectMode = MP3NumberPlay (SW V14 and up)

This mode allows ordering by filename numbering and is easier for individual replacements. Files must be placed in folder /MP3/ and numbered using 4 digits 0001.mp3, 0002.mp3, 0003.mp3 etc. Note: if using a four-digit number and space followed by a filename '0001 my way.mp3', files will play correctly but not labeled by SD2.

* SelectMode = AlbumFolderPlay (SW V14 and up)

A complete album/LP can be played with one selection. Cancel plays next album song. A set of files (album songs) should be placed in folders /01/, /02/, /03/, etc. /99/ is for extra songs 001.mp3, 002.mp3. Short-press button for next album song, long-press to stop AlbumPlay.

Note: to list the order of the songs on the music SD, use DOS command (run **CMD** after clicking search icon and **CD** to your SD card): then **DIR /B /A: -D *.MP3 > SONGS.TXT**. This will create a file that you can read and use for song titles

The WallboxPlayer can play songs that go beyond the selectable numbers through AutoPlay (random). After having put the selectable songs in the root music SD, either create an extra folder e.g., /Extra/ and fill it with the songs you want to hear in random play mode -or- add more songs in the root than can be selected.

Name	Status	#	Title
Extra songs:			
01 Elvis Presley - Jailhouse Rock.mp3		380	Jailhouse Rock
02 Chuck Berry - Roll Over Beethoven.mp3		1965	Roll Over Beethoven
03 Son Jonez - It's Not Unusual.mp3		2066	It's Not Unusual
04 Beatles - Yesterday.mp3		18	Yesterday
05 Bill Withers - Ain't No Sunshine.mp3		854	Ain't No Sunshine
06 Beatles - Eleanor Rigby.mp3		236	Eleanor Rigby

CREATE SONGTITLES: The following free web-applications to create strips are available:

<https://www.pinballrebel.com/archive/other/onlinenew/index.html> or <https://www.mikesarcade.com/arcade/titlesrips.php>.

WallboxPlayers with data SD slot option: Configurations that have a data SD card (right of the display, see picture), enable creation and use of song labels and displays song filenames. For labels and the display, song information from the MP3-ID3 tags (software >V14.5) are retrieved, or otherwise filename ("Artist - Song"), will be generated. Once this is done, the data SD card can be removed (returned into the player slot) and songtitles are remembered.

- To generate these files, insert the MUSIC SD (with MP3's) in the data SD slot and (re)start the device. Files **SONGS.TXT**, **PRINT.HTML** and **LABELS.HTML** are generated in folder /labels/. These can be used to help make song listings and labels (open with computer). Files can be edited/corrected by clicking and editing before printing. After generating files, insert music SD into the blue player SD slot again.

- To generate a custom listing or for album mode play, the file SONGS.TXT (with a song- or album-name on each line, sequential) on the data SD card in /labels/ (/labels/SONGS.TXT) will determine the labels shown on the display.



Label: Song
001: A1: Ram Jam - Black Betty
002: B1: Ray Charles - Georgia On My Mind
003: C1: Rod Stewart - Da Ya
004: D1: Rolling Stones - I Can't Get No Satisfaction
005: E1: Rolling Stones - Angie
006: F1: Rolling Stones - 77
007: G1: Rolling Stones - Sympathy For The Devil
008: H1: Rolling Stones - Start Me Up
009: J1: Ray Charles - On, Pretty Woman
010: K1: Shocking Blue - Venus
011: L1: Simon & Garfunkel - Bridge Over Troubled Water
012: M1: Simon & Garfunkel - The Sound Of Silence
013: N1: Soft Cell - Tainted Love
014: P1: Status Quo - In The Army Now
015: Q1: Status Quo - Roll Over Lay Down
016: R1: Status Quo - Whatever You Want
017: S1: Steppenwolf - Born To Be Wild
018: T1: Stevie Wonder - Isn't She Lovely

More information is on the website www.wallboxplayer.com.

Version: Dec 2025